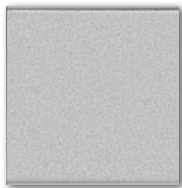


PRODUCT

SWITCHES



RCE-NA1
RCE-NA12
RCE-NA16



RCE-NA4
RCE-NA42
RCE-NA46

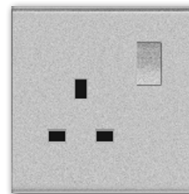


RCE-NA16B

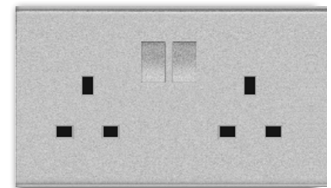


RCE-NA1L-X20

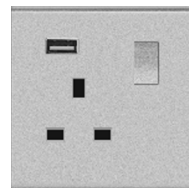
SOCKETS



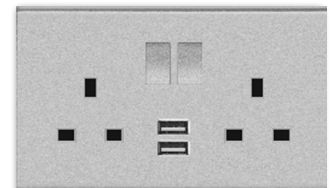
RCE-KA13S
RCE-KA13S-X



RCE-KA13SD
RCE-KA13SD-X



RCE-KU13S
RCE-KU13S-X



RCE-KW13SD
RCE-KW13SD-X

Product Code	Description
Switch, 16AX 250V	
RCE-NA1	1 Gang 1 Way Switch
RCE-NA12	1 Gang 2 Way Switch
RCE-NA2	2 Gang 1 Way Switch
RCE-NA22	2 Gang 2 Way Switch
RCE-NA3	3 Gang 1 Way Switch
RCE-NA32	3 Gang 2 Way Switch
RCE-NA4	4 Gang 1 Way Switch
RCE-NA42	4 Gang 2 Way Switch
Bell Switch, 3A	
RCE-NA16B	1 Gang 1 Way Bell Switch
Retractive Switch	
RCE-NA16	1 Gang 1 Way Retractive Switch
RCE-NA26	2 Gang 1 Way Retractive Switch
RCE-NA36	3 Gang 1 Way Retractive Switch
RCE-NA46	4 Gang 1 Way Retractive Switch
Double Pole Switch	
RCE-NA1L-X20	1 Gang 20A DP Switch With Indicator Light
RCE-NA1L-X45	1 Gang 45A DP Switch With Indicator Light
RCE-KF13SL	13A Switched Fused Connection Unit With Indicator Light
Cooker Unit	
RCE-NA18L	1 Gang 45A Cooker Control Unit & 13A 250V Switched BS Socket With Indicator Light

Product Code	Description
BS Socket Outlet, 13A 250V	
RCE-KA13S	1 Gang Switched BS Socket
RCE-KA13S-X	1 Gang DP Switched BS Socket
RCE-KA13SD	Twin Switched BS Socket
RCE-KA13SD-X	Twin DP Switched BS Socket
BS Socket Outlet & USB Charger, 13A 250V	
RCE-KU13S	1 Gang Switched BS Socket & USB Charger
RCE-KU13S-X	1 Gang DP Switched BS Socket & USB Charger
RCE-KW13SD	Twin Switched BS Socket & 2 Port USB Charger
RCE-KW13SD-X	Twin DP Switched BS Socket & 2 Port USB Charger
Round Pin Socket Outlet, 15A 250V	
RCE-KA15S	1 Gang Round Pin Switched Socket
Other Socket Outlet	
RCE-KA86	16A Universal Socket
RCE-KA86S	16A Switched Universal Socket
RCE-KA586	16A 2 pin Euro-American + Universal Socket
RCE-KW86	16A Universal Socket & Twin USB Charger
RCE-KW586	16A 2 pin Euro-American + Universal Socket & Twin Charger
RCE-KA91	115/230V Shaver Socket

PRODUCT

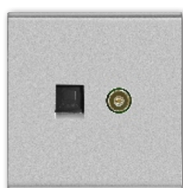
DATA COMMUNICATION



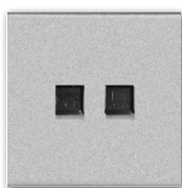
RCE-X1-TV



RCE-X1-ETV



RCE-X2-C6TV



RCE-X2-T6C6

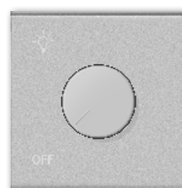


RCE-X2-T6ETV

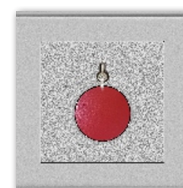


RCE-X2-SB

HOTEL APPLICATIONS



RCE-ND1-630



RCE-XA-PB3



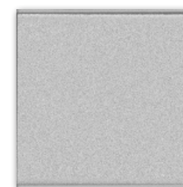
RCE-XA-GLIR



RCE-XA-PIR



RCE-XA-DMBP



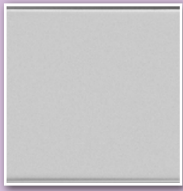
RCE-XA-BP

Product Code	Description
Data / Telephone / TV Socket	
RCE-X1-C6	1 Gang RJ45 Cat. 6 Data Socket (8 Pin)
RCE-X2-C6	2 Gang RJ45 Cat. 6 Data Socket (8 Pin)
RCE-X1-T6	1 Gang RJ12 Telephone Socket (6 Pin)
RCE-X1-TV	1 Gang TV Socket Outlet
RCE-X2-TVFM	1 Gang TV & 1 Gang FM Socket
RCE-X1-ETV	1 Gang Sat. TV Socket (F Connector)
RCE-X2-ETV	2 Gang Sat. TV Socket (F Connector)
RCE-X2-C6TV	1 Gang RJ45 Cat. 6 Data Socket (8 Pin) & 1 Gang TV Socket Outlet
RCE-X2-C6ETV	1 Gang RJ45 Cat. 6 Data Socket (8 Pin) & 1 Gang Sat. TV Socket (F Connector)
RCE-X2-T6C6	1 Gang RJ12 Telephone Socket (6 Pin) & 1 Gang RJ45 Cat. 6 Data Socket (8 Pin)
RCE-X2-T6TV	1 Gang RJ12 Telephone Socket (6 Pin) & 1 Gang TV Socket Outlet
RCE-X2-T6ETV	1 Gang RJ12 Telephone Socket (6 Pin) & 1 Gang Sat. TV Socket (F Connector)
Speaker Socket	
RCE-X1-SB	1 Gang Speaker Socket
RCE-X2-SB	2 Gang Speaker Socket

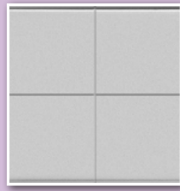
Product Code	Description
Fan Control / Dimmer	
RCE-NF1-300	1 Gang 300VA 230V Fan Control (Rotate on/off)
RCE-ND1-630	1 Gang 630W 230V Dimmer (Rotate on/off)
Hotel	
RCE-XA-PB3	1 Gang Panic Button
RCE-XA-GL	1 Gang Guide Light
RCE-XA-GLIR	1 Gang Guide Light + PIR Sensor
RCE-XA-PIR	1 Gang PIR Sensor
RCE-XA-DMBP	Bell Switch with "Do Not Disturb" + "Make Up Room" + "Please Wait" Indicator
RCE-XA-DMB	Bell Switch with "Do Not Disturb" + "Make Up Room" Indicator
RCE-XA-DB	Bell Switch with "Do Not Disturb" Indicator
RCE-XA-KP20	20A Optical Sensor Key Card Switch
RCE-XA-KH20	20A High Frequency Key Card Switch
RCE-XA-KL20	20A Low Frequency Key Card Switch
Other	
RCE-XA-BP	1 Gang Blank Plate (86 Type)
RCE-XA-BPD	1 Gang Blank Plate (146 Type)

PRODUCT

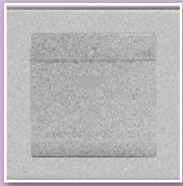
12VDC DEVICES



RCE-NE1P



RCE-NE4P

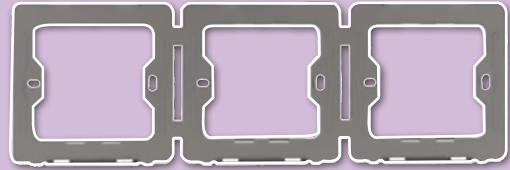


RCE-XE-KP
RCE-XE-KH
RCE-XE-KL



RCE-XE-DMBP

MOUNTING BRACKET



RCE-XA-BG3



Multi Gang Illustration

Product Code	Description
Tactile Switch	
RCE-NE1P	1 Gang Tactile Switch
RCE-NE2P	2 Gang Tactile Switch
RCE-NE3P	3 Gang Tactile Switch
RCE-NE4P	4 Gang Tactile Switch
Key Card Switch	
RCE-XE-KP	1 Gang Optical Sensor Key Card Switch
RCE-XE-KH	1 Gang High Frequency Key Card Switch
RCE-XE-KL	1 Gang Low Frequency Key Card Switch
Bell Switch & Indicator	
RCE-XE-DMBP	Bell Switch with "Do Not Disturb" + "Make Up Room" + "Please Wait" Indicator
RCE-XE-DMB	Bell Switch with "Do Not Disturb" + "Make Up Room" Indicator
RCE-XE-DB	Bell Switch with "Do Not Disturb" Indicator

*White colour not available for 12VDC Devices.

Product Code	Description
RCE-XA-BG1	1 Gang Mounting Bracket
RCE-XA-BG2	2 Gang Mounting Bracket
RCE-XA-BG3	3 Gang Mounting Bracket
RCE-XA-BG4	4 Gang Mounting Bracket

Colour				
White	Silver (4SV)	Champagne (4CP)	Grey (4GR)	Black (4BL)

For further information, please contact your nearest dealer:



✉ info@rfi.com.sg

🌐 www.rfi.com.sg

Product information may change at any time without prior notice.