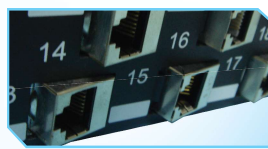


# 24-PORT STAGGERED ANGLE BLANK PANEL

## Description

RFI 24-port Staggered Angle Blank Panel is design to accept the RFI Cat 6A Shielded Tool-less Jack. The staggered and angle arrangement counter the negative effects of alien crosstalk and provides a better bend radius for patch cords routing.



## Features

- Accept RFI Cat 6A shielded jack
- Rear cable management tray
- Staggered design to reduce alien crosstalk
- Angle design to improve patch cord bend radius

## Design Considerations

- Compatible with diversified options for modules, not limited by one particular angled module.
- Improved accessibility: termination field is closer to installer for easier termination
- Low profile: offering more aisle space in small closets
- Unique staggered design: space between modules eliminating alien crosstalk in high bandwidth
- Grounding: guarantees the necessary safety functions
- Designed to easily route cables into vertical cable managers, reducing the need for horizontal, front cable management bars
- Angled & Staggered design

## Application

- Accepting modules for optimum rack density on industry standard racks

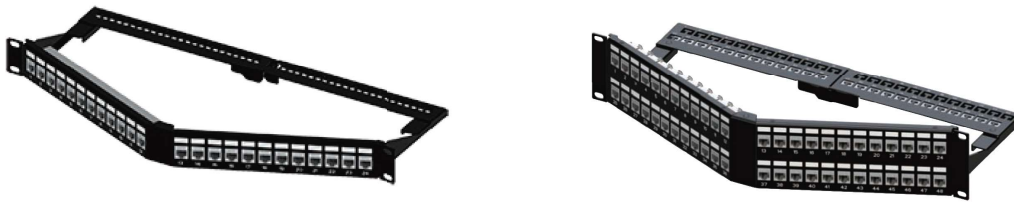
## Standard Compliance

- Meets FCC part 68

## Ordering information

Part No.	Description
RPD-BLSA024-00D	19" 1RU 24-port Staggered Angle Blank Panel

## FOLDED ANGLED KEYSTONE PANEL | TRUNK



- Saving 60% room for stock, package and transportation
- Front panel is optional with solid steel or plastic panel



### Ordering information

Part No.	Description
RPD-BLSF024-00D	Foldable 1U24port keystone jack panel, shielded type, solid steel front panel
RPD-BLSF048-00D	Foldable 2U48port keystone jack panel, shielded type, solid steel front panel

## HINGED ANGLED CABLE MANAGEMENT | CABLE MANAGEMENT



### Ordering information

Part No.	Description
RPD-HACM01U-00D	Foldable cable management, 1U
RPD-HACM02U-00D	Foldable cable management, 2U