

CAT 6A SHIELDED TOOL-LESS IDC JACK

Description

RFI Cat 6A Shielded Tool-less Jack delivers extraordinary electrical performance and efficient flexibility to meet Category 6A component-rated standard in any environment. The PCB and pin are specially design to support maximum signal quality and elimination of possible alien crosstalk. Optional crimp tool is available for easier and faster termination.

Application

- 10 Gigabit Ethernet application

Features

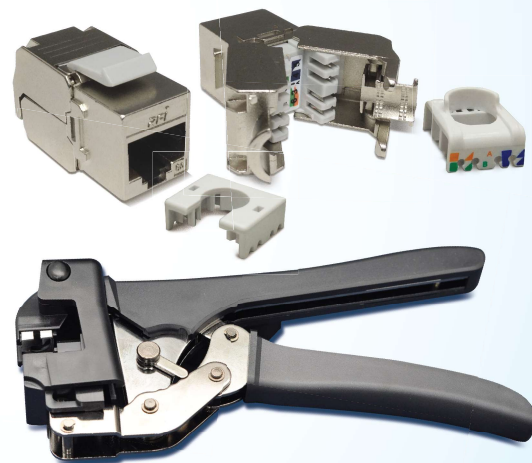
- 180° short and slim profile
- Robust die-cast housing
- Wire cap
- Support both T568A and T568B wiring
- Accept 23 - 26 AWg Stranded & Solid Wire
- Compatible with both 110 & Krone punch down tool
- Tool-less using IDC Cap for wire management
- Option for crimping tool termination

Features

- Insertion force: 30N max
- Retention Strength: 7.7kg between Jack and Plug
- Operating temperature: -10 °C to 60 °C
- Jack life cycle: 750 cycles
- Housing: Zinc Die-Casting with Nickel plated
- Contact: 50micro-inch Gold plated, Phosphor Bronze with Nickel plated
- IDC: PC+Glass fiber, Phosphor Bronze with Tin plated
- Cap: PC+Glass fiber, UL 94-V2
- Stainless Steel Clip
- Zinc Die Casting with Nickel plated grounding contact
- PCB: FR4, UL 94-V0

Standard

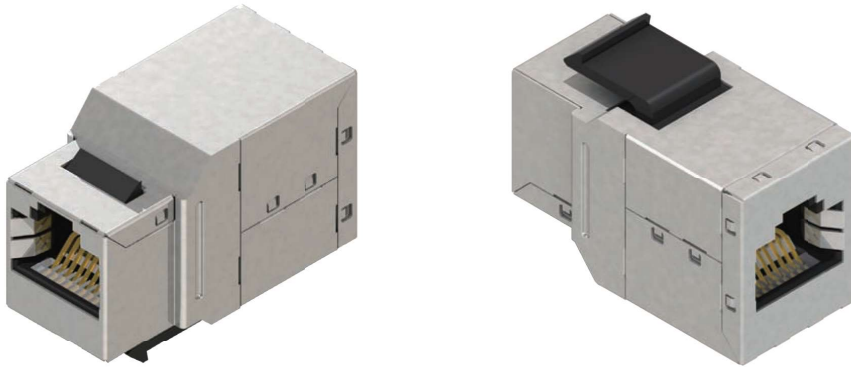
- IEC 60603-7-5
- ISO / IEC 11801
- ANSI / TIA 568 C.2
- ROHS compliance



Ordering information

Part No.	Description
RJD-6AS8880-00D	Cat 6A 180° Tool-less Full Shielded IDC Jack
RTL-CR006AS-00D	Crimping Tool

IN-LINE COUPLER KEYSTONE JACK TYPE | IN-LINE COUPLER

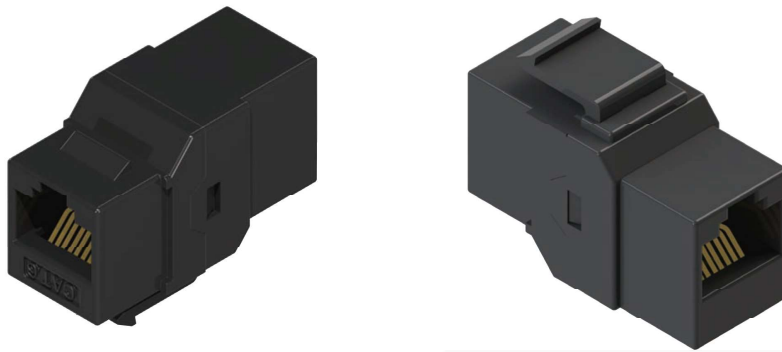


- C6A channel performance by ETL verified
- UL safety listed
- Fits for 1U24port keystone jack panel
- L x W x H: 35.2 x 17.1 x 24.5mm



Ordering information

Part No.	Description
RJD-60SKJ9A-S0D	In-line coupler keystone type, C6 full shielded
RJD-6ASKJ9A-S0D	In-line coupler keystone type, C6A full shielded



- L x W x H: 35.2 x 17.1 x 24.5mm

Part No.	Description
RJD-60UKJ9A-07D	In-line coupler keystone type, C6 unshielded