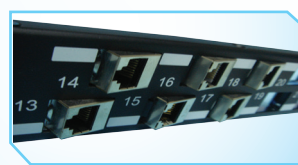


# 24-PORT STAGGERED ANGLE BLANK PANEL

## Description

RFI 24-port Staggered Angle Blank Panel is design to accept the RFI Cat 8 & Cat 6A Shielded Tool-less Jack. The staggered and angle arrangement counter the negative effects of alien crosstalk and provides a better bend radius for patch cords routing.



## Features

- Accept RFI Cat 8 & Cat6A shielded jack
- Rear cable management tray
- Staggered design to reduce alien crosstalk
- Angle design to improve patch cord bend radius

## Design Considerations

- Compatible with diversified options for modules, not limited by one particular angled module.
- Improved accessibility: termination field is closer to installer for easier termination
- Low profile: offering more aisle space in small closets
- Unique staggered design: space between modules eliminating alien crosstalk in high bandwidth
- Grounding: guarantees the necessary safety functions  
Designed to easily route cables into vertical cable managers,
- reducing the need for horizontal, front cable management bars
- Angled & Staggered design

## Application

- Accepting modules for optimum rack density on industry standard racks

## Standard Compliance

- Meets FCC part 68

## Ordering information

Part No.	Description
RPD-BLSA024-00D	19" 1RU 24-port Staggered Angle Blank Panel