

# CAT 5E UNSHIELDED 180° DUAL IDC JACK

## Description

RFI Cat 5E Unshielded 180° Dual IDC Jack is designed with a short and slim profile. It optimizes space in a confined area. The Dual IDC allows common tools to be used for termination. Wire Caps are provided to prevent dust and foreign materials from setting onto the IDC contacts.

## Application

Gigabit Ethernet application.

## Features

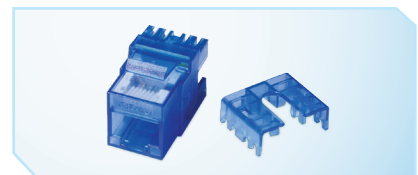
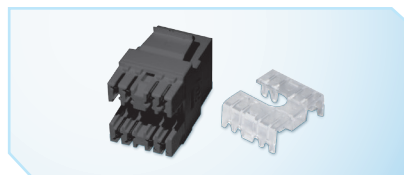
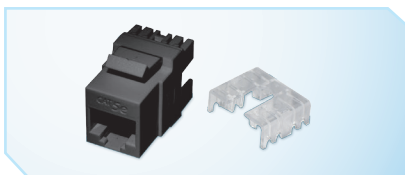
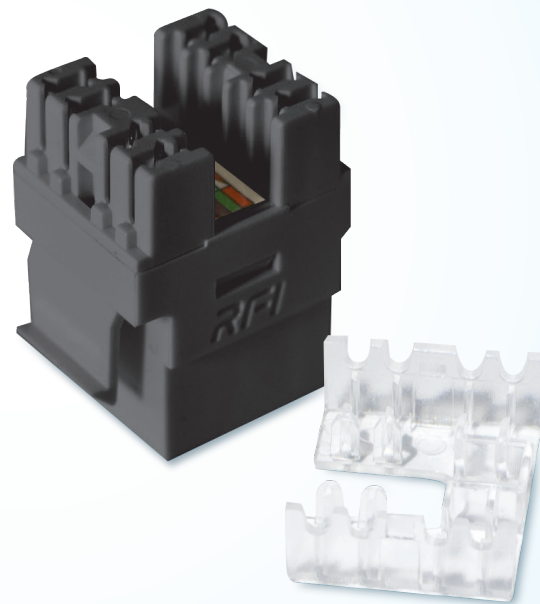
- 180° short and slim profile
- Dual IDC
- Wire Cap
- Accept 22-26 AWG solid wire
- Support both T568A and T568B wiring
- Support Gigabit Ethernet application

## Characteristics

- Current Rating: 1.5 amp (max.)
- Voltage Rating: 150V
- Contact Resistance: 20 m-Ω
- Insulation Resistance: 500 m-Ω
- Dielectric Withstand Voltage: 1000 V AC
- RMS, 60Hz 1min
- Housing: PC UL94V-0
- IDC: PC UL94V-0
- PCB: FR4 1.6mm (0.4") thickness, 2 layers
- Contact: PC UL94V-0

## Standard

- ANSI/TIA-568
- ISO/IEC 11801
- UL 1863
- RoHS compliance
- Reach compliance



## Ordering information

Part No.	Description
RJD-5EU8883-07B	Cat 5E Unshielded Pro Line 180° Dual IDC Jack, Black
RJD-5EU8883-00B	Cat 5E Unshielded Pro Line 180° Dual IDC Jack, Blue