

CAT 6 UNSHIELDED 180° DUAL IDC JACK

Description

RFI Cat 6 Unshielded 180° Dual IDC Jack is designed with a short and slim profile. It optimizes space in confine area. The Dual IDC allows common tools to be used for termination. Wire Cap are provided to prevent dust and foreign materials from settling onto the IDC contacts.

Application

Gigabit Ethernet application.

Features

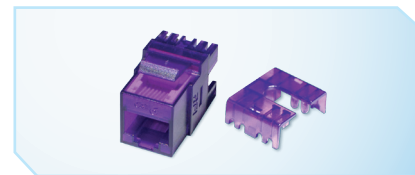
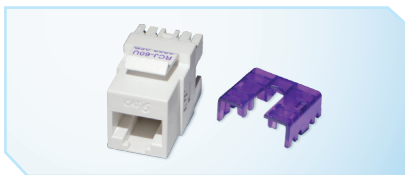
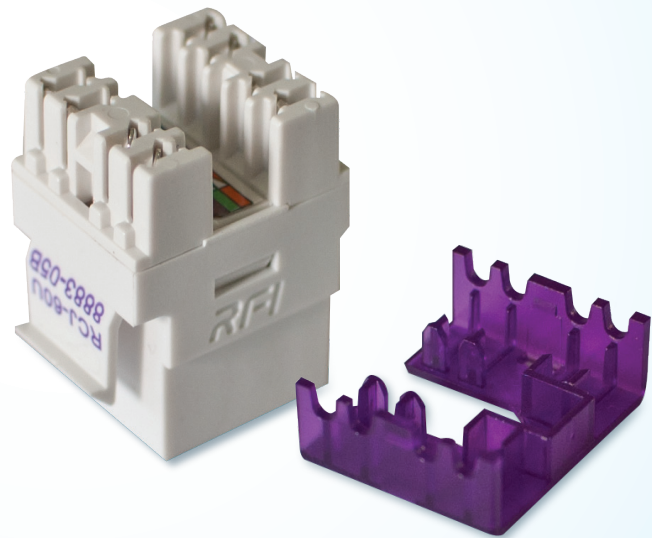
- 180° short and slim profile
- Dual IDC
- Wire Cap
- Accept 22-26 AWG solid wire
- Support both T568A and T568B wiring
- Support Gigabit Ethernet application

Characteristics

- Current Rating: 1.5amp (max.)
- Voltage Rating: 150 V
- Contact Resistance: 20 m-Ω
- Insulation Resistance: 500 m-Ω
- Dielectric Withstand Voltage: 1000 V AC
- RMS, 60Hz 1min
- Housing: PC UL94V-0
- IDC: PC UL94V-0
- PCB: FR4 1.6mm(0.4") thickness, 2 layers
- Contact: PC UL94V-0

Standard

- ANSI/TIA-568
- ISO/IEC 11801
- UL 1863
- RoHS compliance
- Reach compliance



Ordering information

Part No.	Description
RJD-60U8883-05B	Cat 6 Unshielded Pro Line 180° Dual IDC Jack, White
RJD-60U8883-09B	Cat 6 Unshielded Pro Line 180° Dual IDC Jack, Purple