

# CAT 6A SHIELDED TOOL-LESS IDC JACK

## Description

RFI Cat 6A 180° STP Shielded Tool-less keystone Jack, New improved design with Pre-insert the cable-tie and die-cast cap stopper, simple installation and maintain high standard electrical performance. Meets Category 6A component requirements. The PCB and pin are specially design to support maximum signal quality and elimination of possible alien crosstalk. Optional crimp tool is available for easier and faster termination.

## Application

- 10 Gigabit Ethernet application

## Features

- 180° short and slim profile
- Robust die-cast housing
- Wire cap
- Support both T568A and T568B wiring
- Compatible with both 110 & Krone punch down tool
- Tool-less using IDC Cap for wire management

## Mechanical Characteristics

- Jack life cycle: 750 cycles
- Insertion force: 30N max
- Retention Strength: 7.7kg between Jack and Plug

## Material Specification

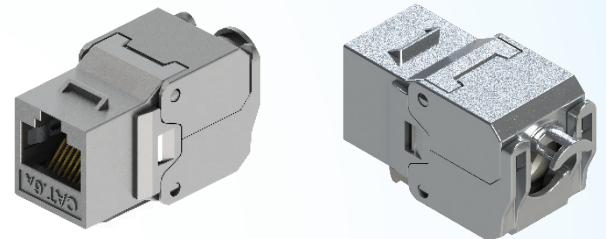
- Housing: Zinc Die-Casting with Nickel plated
- Contact: 50 micro-inch Gold plated, Phosphor Bronze with Nickel plated
- IDC: Polycarbonate, UL94V-2, Phosphor Bronze with Tin plated
- IDC Cap: Polycarbonate, UL94V-2
- Cap: Zinc Die-Casting with nickel plating
- Zinc Die Casting with Nickel plated grounding contact
- PCB: FR4, UL 94-V0

## Electrical Characteristics

- |                             |   |
|-----------------------------|---|
| • Contact resistance        | ≤ 20 mΩ , from initial  |
| • Insulation resistance     | ≥ 500 MΩ at 100 Vdc, for 60 s                                     |
| • Voltage proof             | contact to contact 1000 Vdc, contact to shield 1500 Vdc, for 60 s |
| • Current carrying capacity | 1.0 A at 60 C   |
| • UL Voltage rating         | 150V  |
| • POE                       | 60 Vdc, IEEE 802.3bt Type 4 PoE++ (4PPoE) 100 W                   |

## Standard

- IEC 60512-99-002, IEEE 802.3bt Type 4 PoE++ (4PPoE) 100 W
- ISO/IEC 11801-1, Class D/E/EA
- ANSI/TIA-568.2-D
- ROHS / REACH compliance
- IEC 60603-7-1

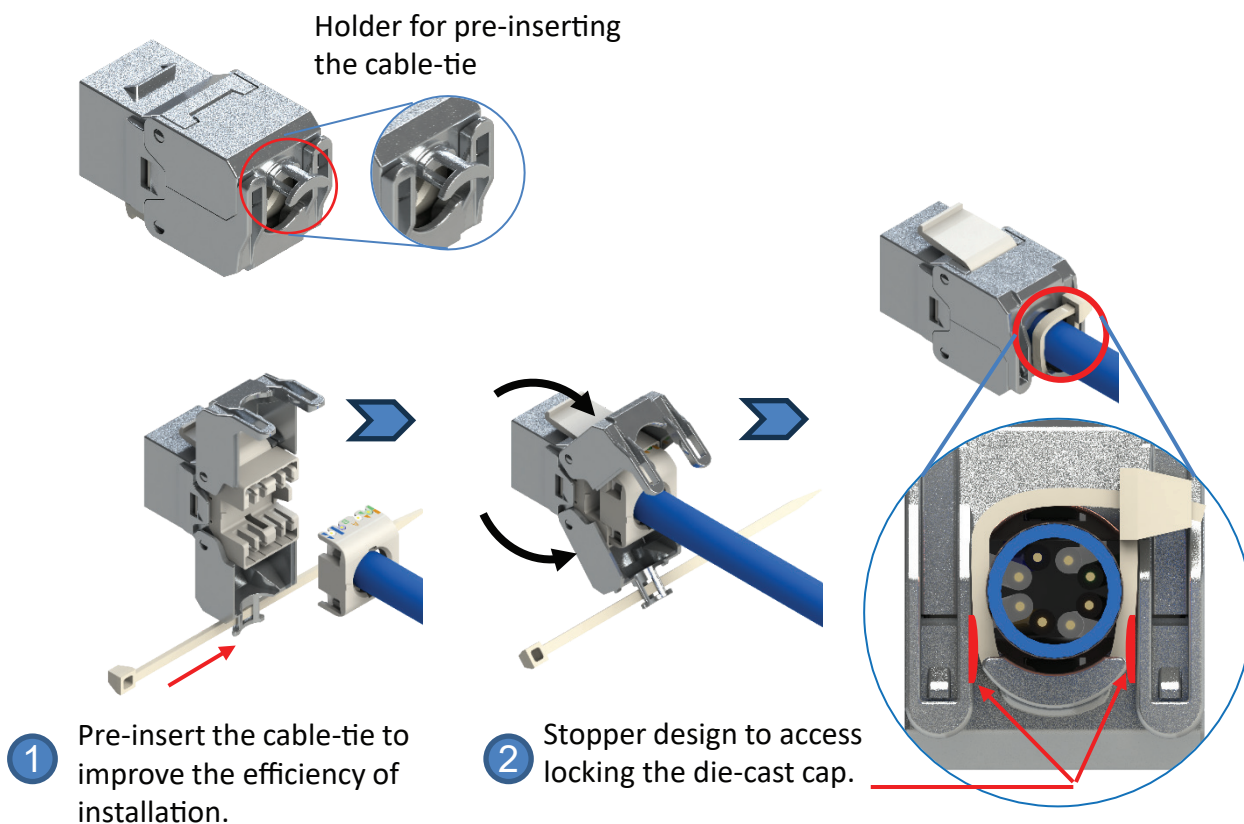


# CAT 6A SHIELDED TOOL-LESS IDC JACK

## Installation Information

- Wire conductor range                      Solid Stranded, 23 to 26 AWG
- Cable OD range                                5.0mm to 8.5mm
- IDC re-installing cycles                      20
- Installing Temperature                      0°C to 50°C
- Storage Temperature                        -40°C to 70°C
- Operating Temperature                      -10°C to 60°C
- Humidity                                         10% to 90% RH

## Installation Guide



## Ordering information

Part No.	Description
RJD-6AS8880-20D	Cat6A 180° Tool-less Full Shielded IDC Jack
RTL-ETCA000-00D	Cat6A Keystone Jack Termination tool, Black color block